

---

**Bears can be attracted to establishments** that have food because of odors and garbage.

**Problems may arise when:**

- People are in close contact with bears.
- Bears damage personal property.
- Bears become dependent on a food source.
- Bears scatter garbage.

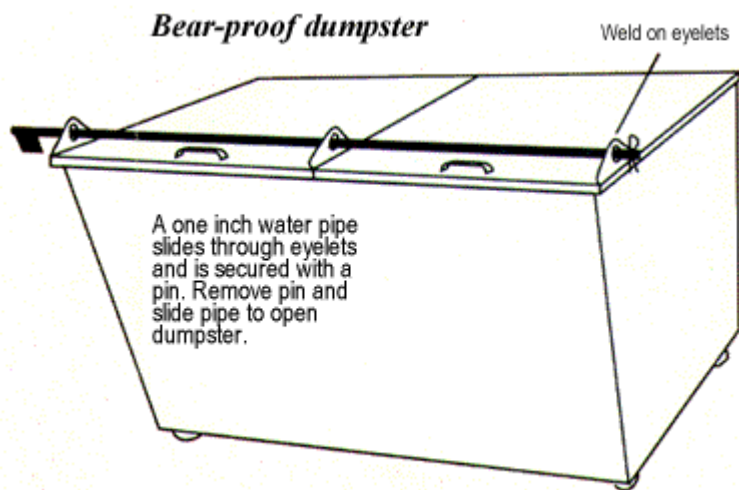
**To help reduce bear problems:**

- Use bear-proof cans and dumpsters
- Move cans and dumpsters away from areas used by people.
- Pick up garbage and fish remains promptly every evening.
- Wash cans and dumpsters frequently.
- Use lime to cut odors.

**Teach people to:**

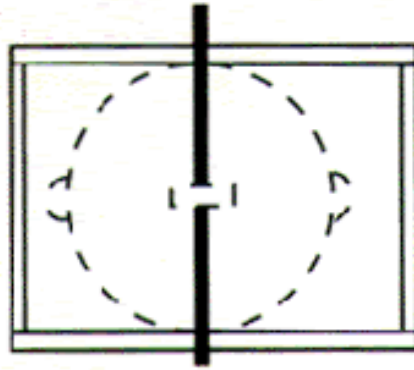
- NOT FEED BEARS
- NOT STORE FOOD IN TENTS!
- Store food out of site in a car trunk or cabin.
- Rinse containers before disposal or recycling. These precautions will help reduce bear problems.

**When you find a system that works stay with it.**



## ***Bear-proof garbage can***

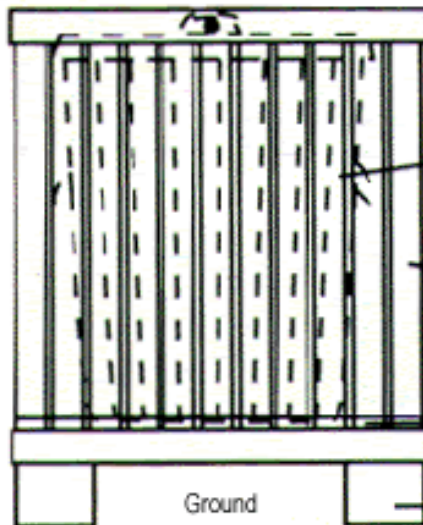
Top View



Garbage Can Lid

A one inch water pipe slips under garbage lid handle and into holes in side of crib. Slide pipe out to open lid.

Side View



Drill holes for pipe to fit through.

Garbage Can

Crib is four sided and open at the top. You can make the crib longer to hold more cans.

Wood Decking

Ground

Blocks